

THIS BEST-SELLER IS A COST-EFFECTIVE WAY TO START/STOP FLOW

The manually-operated valve utilizes a squeeze-and-turn trigger handle. Air & electronically actuated valves are available. A 90-degree turn of the handle rotates an internal disc, which will start or stop flow of product.

The SV80 utilizes a clamp connection by default. Each valve end requires a clamp and clamp gasket. Sanivalve offers customized valve ends for nearly any connection.

The valve is designed to have no cavities for any stagnant product to breed bacteria. All valves have the heat number engraved on the body of the valve with mill test reports included. The standard surface finish is <25Ra, with surface finishes meeting and exceeding ASME BPE standards for high-purity applications available

Air-Actuated valves are available!



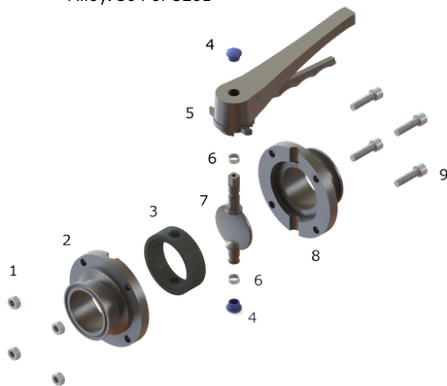
OPERATION	Manual	16-point stainless steel trigger handle.
	Pneumatic	Normally closed, normally opened.
	Electric	On-Off indicator light, passive contact signal, intelligent control, 10K, 5K potentiometer placeholder

SURFACE FINISH	Standard	>32Ra
	SF1	>20Ra
	SF-EP	>15Ra electropolished

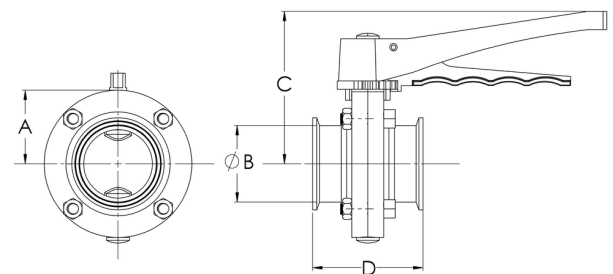
TECHNICAL SPECS	Sizes Available	0.5" - 8" Clamp Connection (Custom available)
	Body Seals:	EPDM. Opt: Viton, Silicone
	Max Pressure:	1Mpa / 10bar / 150PSI
	Temperature Range	-5 to +95C
	Alloy: 304 or 316L	

DOCUMENTS	Material Test Report EN300.1
	Surface Test Report (SF1, SF-EP ONLY)

SUITABLE FOR	Food, Beverage & Industrial Processing Lines, Water & Drain Lines,
---------------------	--



Part	Description	Material	QTY
1	M6X1 NUT	304	4
2	VALVE BODY (HALF)	304 or 316L	2
3	VALVE SEAT	EPDM (Viton, Silicone avail.)	1
4	PLASTIC CAP	ABS	2
5	HANDLE	304	1
6	SHAFT SLEEVE	ACRYLIC	2
7	BUTTERFLY DISC	304 OR 316L	1
8	M6X1 BOLT	304	4



Tube OD	A (INCHES)	B (INCHES)	C (INCHES)
1"	0.87	2.6	1.3
1.5"	1.37	2.756	1.378
2"	1.87	3	1.5
2.5"	2.37	3.156	1.578
3"	2.843	3.316	1.658
4"	3.843	3.46	1.73